



FLORIDA DEPARTMENT OF TRANSPORTATION PROJECT FLYER

State Road (SR) 845/Powerline Road Resurfacing, Restoration, and Rehabilitation (RRR) Project
From SR 870/Commercial Boulevard to South Palm Aire Drive
In the cities of Oakland Park, Fort Lauderdale, and Pompano Beach
Broward County, FL
Financial Project ID Number: 446196-1-52-01, 446196-1-52-02 and 446196-1-52-03

SR 845/Powerline Road RRR Project

The Florida Department of Transportation (FDOT) is pleased to provide the community with information regarding the SR 845/Powerline Road RRR Project. The project limits are on SR 845/Powerline Road from SR 870/Commercial Boulevard to South Palm Aire Drive in the cities of Oakland Park, Fort Lauderdale, and Pompano Beach. This project aims to enhance the safety, resiliency, and longevity of the infrastructure for our communities.

Construction Cost: \$5,469,441

Construction Start: July 2024

Estimated Completion: Summer 2025

PROJECT IMPROVEMENTS

- Milling and resurfacing the roadway within project limits to ensure long-term resilience
- Upgrading technology including pedestrian signals at signalized intersections to improve push button accessibility
- Installing new light poles within project limits to enhance nighttime visibility
- Replacing bridge expansion joints over the Cypress Creek Canal (C-14) bridge
- Installing railing on the west side barrier of the Cypress Creek Canal (C-14) bridge to enhance pedestrian safety
- Updating curb ramps, pavement markings, and signage within project limits to improve visibility and accessibility

CONTACT INFORMATION

Erik Nemati, P.E. — FDOT Construction Manager
erik.nemati@dot.state.fl.us or (954)-299-6441

Heidy Cuevas, P.E. — Senior Project Engineer
heidy.cuevas@cdrmaguire.com or (954) 778-1113

Liz Cardenas, E.I. — Project Administrator
lcardenas@americanenggroup.com or (786) 393-7062

Jackie De Freitas — Community Outreach Specialist
jdefreitas@corradino.com or (561) 436-9721

WEBSITE AND SOCIAL MEDIA

X/Instagram: @MyFDOT_SEFL

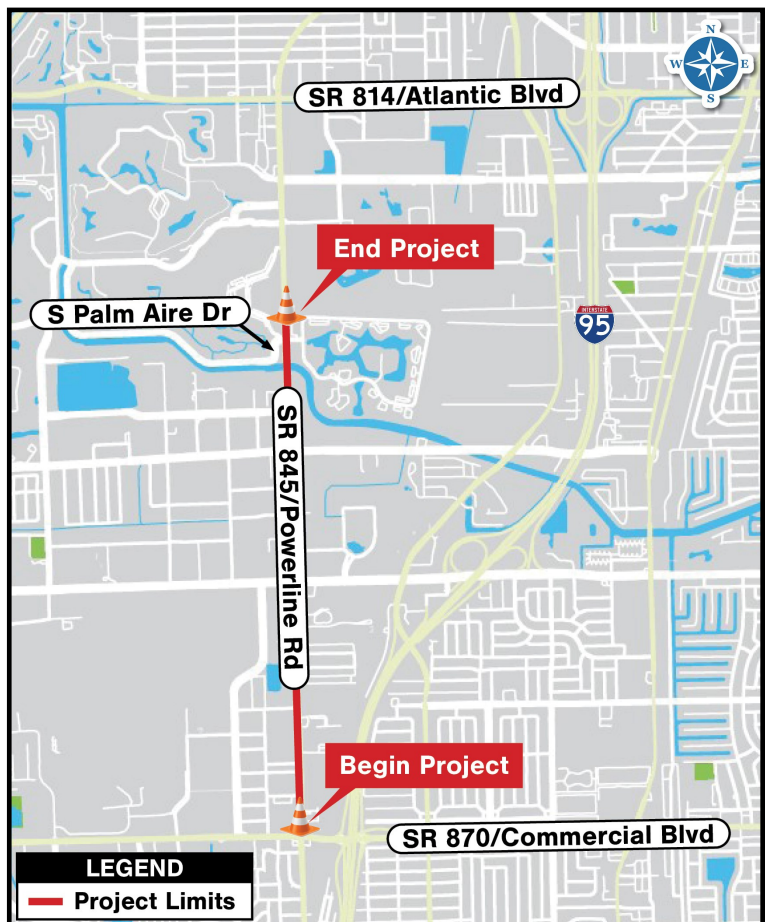
Facebook: @MyFDOTSEFL

Project website: www.d4fdot.com



TRAFFIC IMPACTS

- Single lane closures are permitted daily as needed, 9:30 a.m. until 3:00 p.m.
- Single lane closures are permitted nightly as needed, 8:00 p.m. until 6:00 a.m., Sunday through Thursday.
- Motorists and pedestrian access to businesses and residences will be maintained at all times
- Additional information about lane closures, detours, and pedestrian impacts will be provided in the weekly traffic report distributed by FDOT and can be viewed using the following link: [FDOT Broward County Construction - Home \(d4fdot.com\)](http://FDOT Broward County Construction - Home (d4fdot.com))



FLORIDA DEPARTMENT OF TRANSPORTATION MISSION STATEMENT

The mission of the Florida Department of Transportation is to provide a safe statewide transportation system that promotes the efficient movement of people and goods, supports the state's economic competitiveness, prioritizes Florida's environment and natural resources, and preserves the quality of life and connectedness of the state's communities.

Please contact the Community Outreach Specialist, Jackie De Freitas, to be added to project email notification lists. If special accommodations under the Americans with Disabilities Act (ADA) or translation services (free of charge) are needed, please contact the FDOT Construction Manager, Erik Nemati. Public participation is solicited without regard to race, color, national origin, age, sex, religion, disability, or family status. Para información y preguntas en Español, por favor llame al (954) 777-4302.